

Mobile Medical Facilities – Full Details

Emerging Markets Version

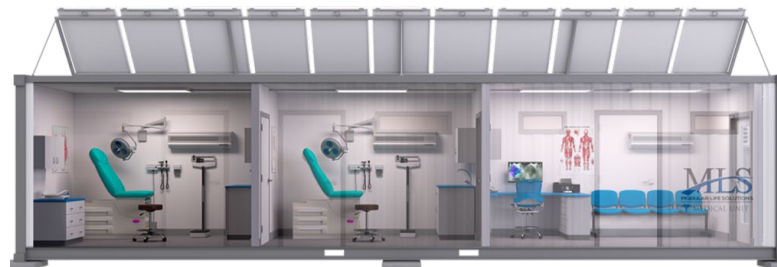
June 2019



Mobile Healthcare Solutions

Custom Mobile Medical

2



Mobile Healthcare Solutions

3



Truck-Style Platforms



Medium-Duty Truck

- Freightliner or International Chassis available depending on location
- 4x4 available
- Diesel Engine
- 25,000 LB. - 54,600 LB. GVWR
- Aluminum or Fiberglass body
- 22-34 ft. load space



Mobile Healthcare Solutions

Van Platforms

4



- Sprinter or Ford Body and Chassis available depending on location
- 4x4 available
- Gasoline or Diesel engine based on model chosen
- 8,500 - 11,030 GVWR
- 213-530 cu. in. of cargo space
- 22-34 ft. load space



Mobile Healthcare Solutions

Features & Benefits

5



Product Types

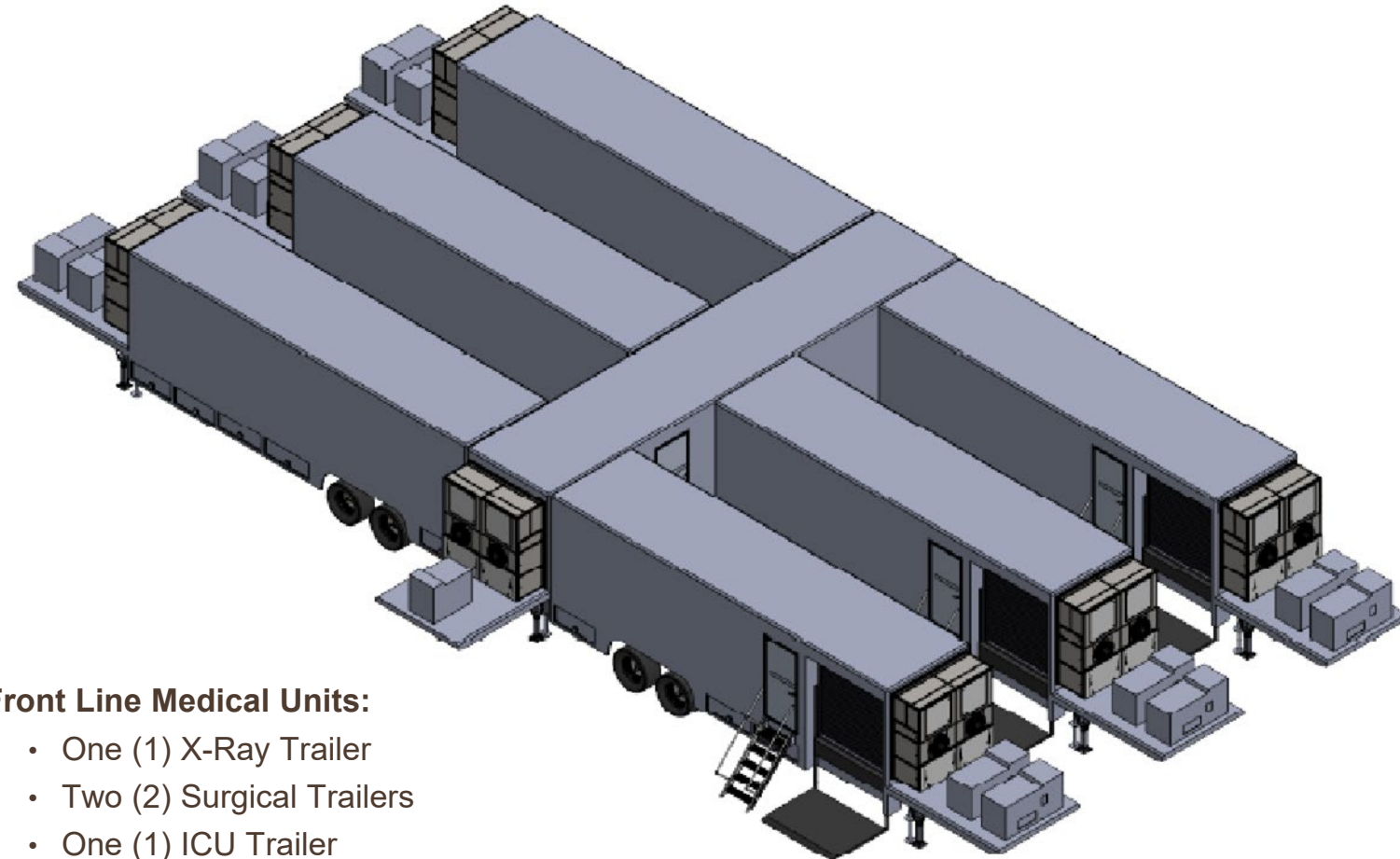
- Healthcare
- Dental
- Mammography
- Mobile Screening
- Laboratories
- Vision Clinics
- Hearing Units
- Custom Combinations

- Modular standardized sizes, large choice of models and accessories
- Pre-engineered with international standards and best technologies; optimized for performance.
- Compact, Robust and Easy to transport
- Fully furnished equipment and rooms for consultations/ examinations. Used equipment options available
- Ease of Use – Plug & Consult, deployable medical facility with minimal training if required
- Integrated temperature control environment & medical grade refrigeration systems
- Solar plus energy storage (battery) choice (AGM, GEL, LiFePo4, etc.) for hours/days of autonomy with generator backup, as required
- Safe, reliable, warranted, with lower life cycle cost (low acquisition cost, low O&M, etc.)
- Designed and Manufactured in the USA to **Higher Quality standards**

Mobile Healthcare Solutions

Fully Functional Hospital Trailer System

6



Front Line Medical Units:

- One (1) X-Ray Trailer
- Two (2) Surgical Trailers
- One (1) ICU Trailer
- Two (2) Recovery Trailers
- One (1) Corridor Trailer



PGPModularUtilities

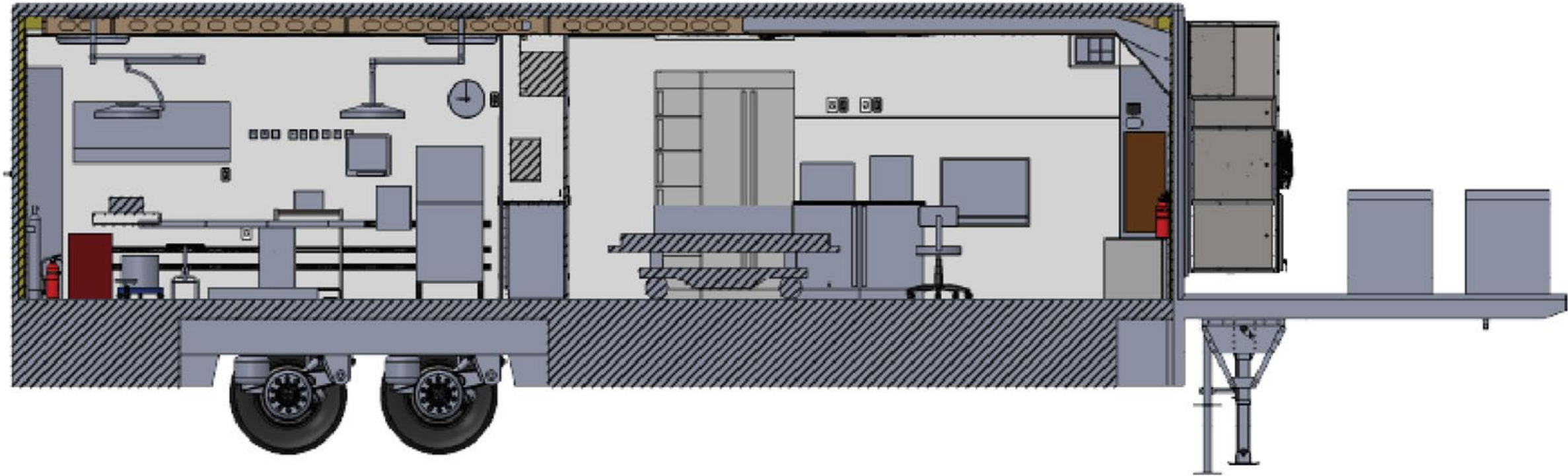


ProGlobalPartners

Mobile Healthcare Solutions

Hospital Trailer System: Individual Trailer Diagram

7



PGP Modular Utilities

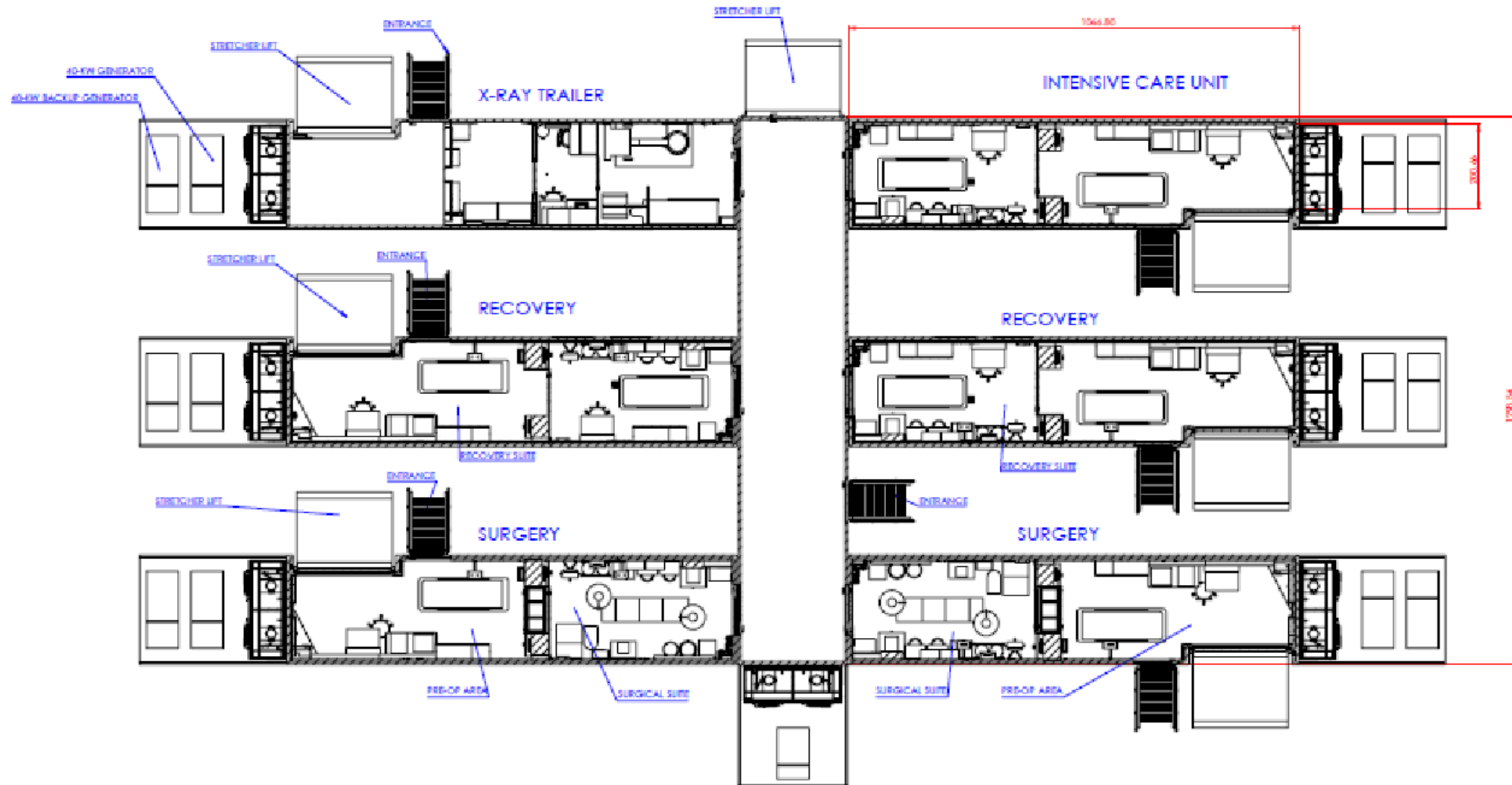


ProGlobalPartners

Mobile Healthcare Solutions

Fully Functional Hospital Trailer System

8



SECTION A-A
SCALE 1:40

Mobile Healthcare Solutions

Fully Functional Dental Coach

9



PGP Modular **Utilities**

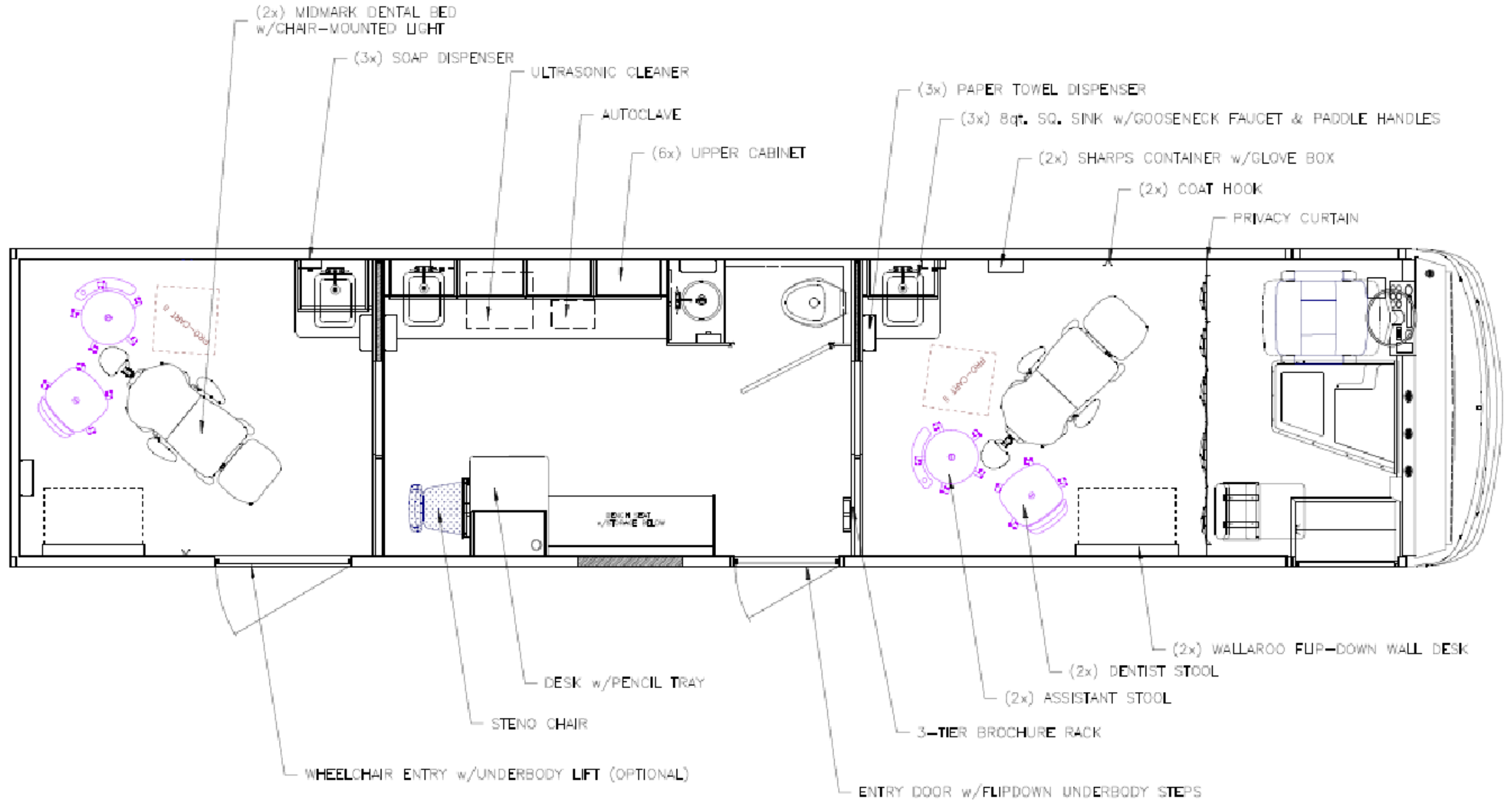


ProGlobalPartners

Mobile Healthcare Solutions

Fully Functional Dental Coach

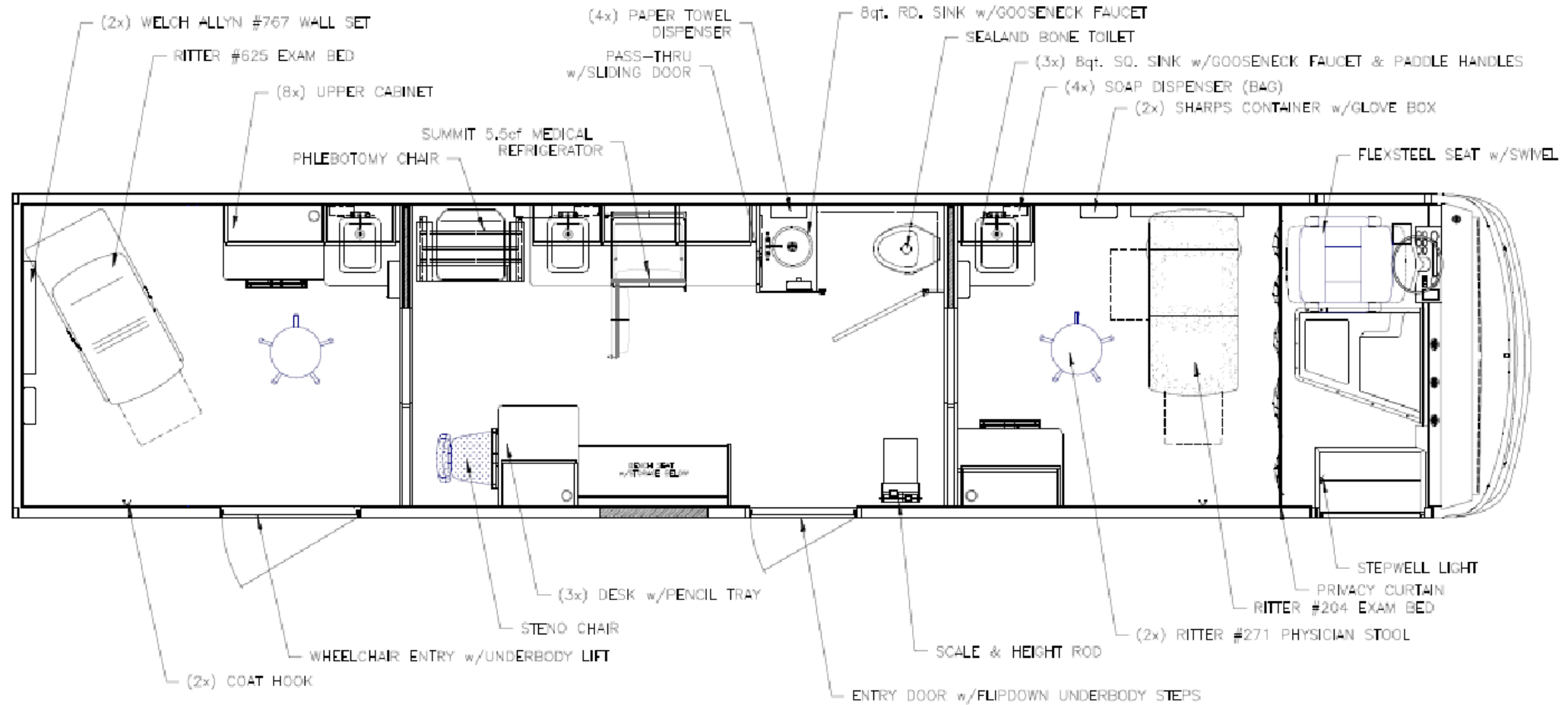
10



Mobile Healthcare Solutions

Fully Functional General Practitioner Coach

11



Mobile Healthcare Solutions

Value Proposition

12



The mobile and containerized healthcare systems are self-sustainable and affordable solutions that can provide safe, sterile and relocatable medical facilities to cater and transform the health of communities. The systems can be customized to meet a variety of needs: they are scalable both in size and functionality, portable and can be placed in almost any environment. Units can be used independently or in connection with other systems.

- **Advance Healthcare**

Complete turnkey field/mobile hospital enables increased access to healthcare in underserved, remote areas or emergency locations cost-effectively.

- **Lower Mortality Rate - Wellness**

Specialists and other critical practitioners can now offer several life-saving services to all communities. Vaccinations and prescriptions can now be stored safely.

- **Equipment Availability**

X-rays, Intensive Care, surgeries, and other medical procedures can now be conducted on site in remote locations. They can serve as primary care clinics, hospitals, lab facility etc.

- **One-Stop-Shop**

Simplifies system acquisition process and reduces haggling and construction. Provides access to higher-quality, medical supplies that are easy to outfit, operate and maintain.

- **Flexibility & Versatility**

Simplified mobility configuration allows for rapid deployment, commissioning and/or relocation, as necessary.

- **Uptime**

Solar with battery storage improves power reliability/resilience and enables autonomous operation and extended uptime. Can be designed with primary and back-up power generation sources

- **Low Cost of Ownership**

Lower energy, lower capital cost, efficient operation and low maintenance improves profitability and life cycle cost.

- **Financing Options**

Payback terms from 1 to 10 years, for qualified borrowing entities

- **High ROI for entrepreneurial Medical Practitioners**

Short payback period. Provides opportunities for entrepreneurship.

- **Training**

Easy to train locals for O&M and/or remote monitor and controls (i.e. automated alerts, data logging, and data storage etc.)

- **Warranty and Support**

Peace of mind with after sales contracts or support

Mobile Healthcare Solutions

Pricing Models

13



- **Mobile Trailer Hospital System - \$8 – 10MM**

Complete turnkey field/mobile hospital enables increased access to healthcare in underserved, remote areas or emergency locations cost-effectively.

- **Dental Coach - \$400-600k**

Specialists and other critical practitioners can now offer several life-saving services to all communities. Vaccinations and prescriptions can now be stored safely.

- **General Practitioner Coach - \$500-\$700k**

X-rays, Intensive Care, surgeries, and other medical procedures can now be conducted on site in remote locations. They can serve as primary care clinics, hospitals, lab facility etc.

- **Dental, Blood, and Medical Trucks- Starting at \$200k**

PROGLOBAL PARTNERS- GHANA						
<i>Sample Amortization Schedule- 7 Years</i>						
<i>(For Discussion Purposes Only)</i>						
Contract Price: \$1,500,000						
Down Payment (15%): \$225,000						
Financed Amount (85%): \$1,275,000						
Local Costs (VAT, etc. up to 30%): \$450,000						
Financed Amount (including Local Costs): \$1,725,000						
Ex-Im Bank Exposure Fee (estimated at 9.0%): \$155,250						
Total Loan: \$1,880,250						
Interest Rate: 6-month LIBOR (currently 2.62%) plus spread of 2.95% = 5.57% p.a.						
Compound Period:			Exact Days			
Nominal Annual Rate:			5.570%			
CASH FLOW DATA						
	Event	Date	Amount	Number	Period	End Date
1	Loan	6/1/2019	1,880,250.00	1		
2	Payment	12/1/2019	134,303.57	14	Semiannual	6/1/2026
	Fixed Principal (+Int.)					



Financing Support

Public & Private Funding Sources

14



We provide integrated finance solutions to support overseas healthcare projects and equipment sales on a short, medium or long-term basis to qualified foreign buyers. The following are characteristics of an applicable program:

- Available for equipment made in the USA
- Terms typically from 1 to 7 years
- Financing from \$150,000 to \$10,000,000 and more.
- Variable rates (based on Libor) and Fixed Rates available
- Finance typically up to 85% of equipment value, and up to 100% in certain cases
- Down payment and local cost financing available for qualified projects
- Unsecured financing often available when supported by government programs of the USA



USTDA
U.S. TRADE AND DEVELOPMENT AGENCY

EXIM
EXPORT-IMPORT BANK
OF THE UNITED STATES

Minimum Underwriting Requirements from Purchasing Entity

- 3 years of internationally audited financial statements or acceptable bank guarantee
- 15% down payment
- Details on payment plan
- Favorable long-term market indications
- Buyer having three (3) years of experience in the industry
- Detailed description of the buyers' business structure



PGPModularUtilities



ProGlobalPartners

About ProGlobalPartners

Delivering all that is vital.

15



ProGlobalPartners, LLC (PGP) is a US based exporter that provides streamlined support for every aspect of the international sales process, helping U.S. and foreign clients build key relationships and complete successful transactions. Our turnkey approach of offering the highest quality products, logistics support and financing options make executing international transactions simpler and more convenient for all parties involved.

PGP Modular Utilities (PMU), a division of PGP, is on a mission is to bring essential infrastructure to frontier communities. Started by two guys who wanted to help communities that lacked the vital infrastructure of modern life, PMU has developed off-grid infrastructure systems that deliver clean water, power and other off-grid solutions with streamlined setup and operations. The group's unique and deep knowledge of pre-engineered off-grid solutions using American made engineering components, technology solutions and building materials makes them the go-to resource to foreign clients. Available solutions include:



- **Power** – Power solutions are configured in single containers with solar panels/wind turbines/generators, switchgear, batteries, UPS, HVAC units and/or all associated fire and safety equipment inside. It can be deployed quickly to expand existing power capacity, incorporated into greenfield modular facilities or used in disaster recovery situations.
- **Water** – Water treatment solutions offer small footprint, cost-effective water treatment installations for ultrafiltration, seawater desalination, reverse osmosis, storage and more.
- **Refrigeration Solution** – Cold rooms, freezers, ice manufacturing and storage units are the perfect solution for applications requiring positive or negative temperatures for holding fruits, vegetables, meats, other foodstuff. Ideal for Off-grid or Urban Growers, Supermarkets, Hotels/resorts, Restaurants, and Ports, etc.
- **Custom Solution** – Custom solutions include off-grid medical, housing, classrooms, telecom substations, fueling stations, and security barriers & guard houses.



PGPModularUtilities



ProGlobalPartners



*"The most important aspects of our business are the relationships we build.
Combining these bonds with our experiences in trade enhance our local & global
communities. We are developing a world of collaboration and partnership."
-Steven McDonnough, CEO*

Corporate Headquarters: 8727 Shrader Road, Henrico, Virginia 23228 USA
Regional Office: 222 S. Church St, Suite 100, Charlotte, North Carolina 28202 USA
+1.833.719.1833 www.proglobalpartners.com info@proglobalpartners.com

 **PGP Advisory Services**

 **PGP Integrated Solutions**

 **PGP Modular Utilities**